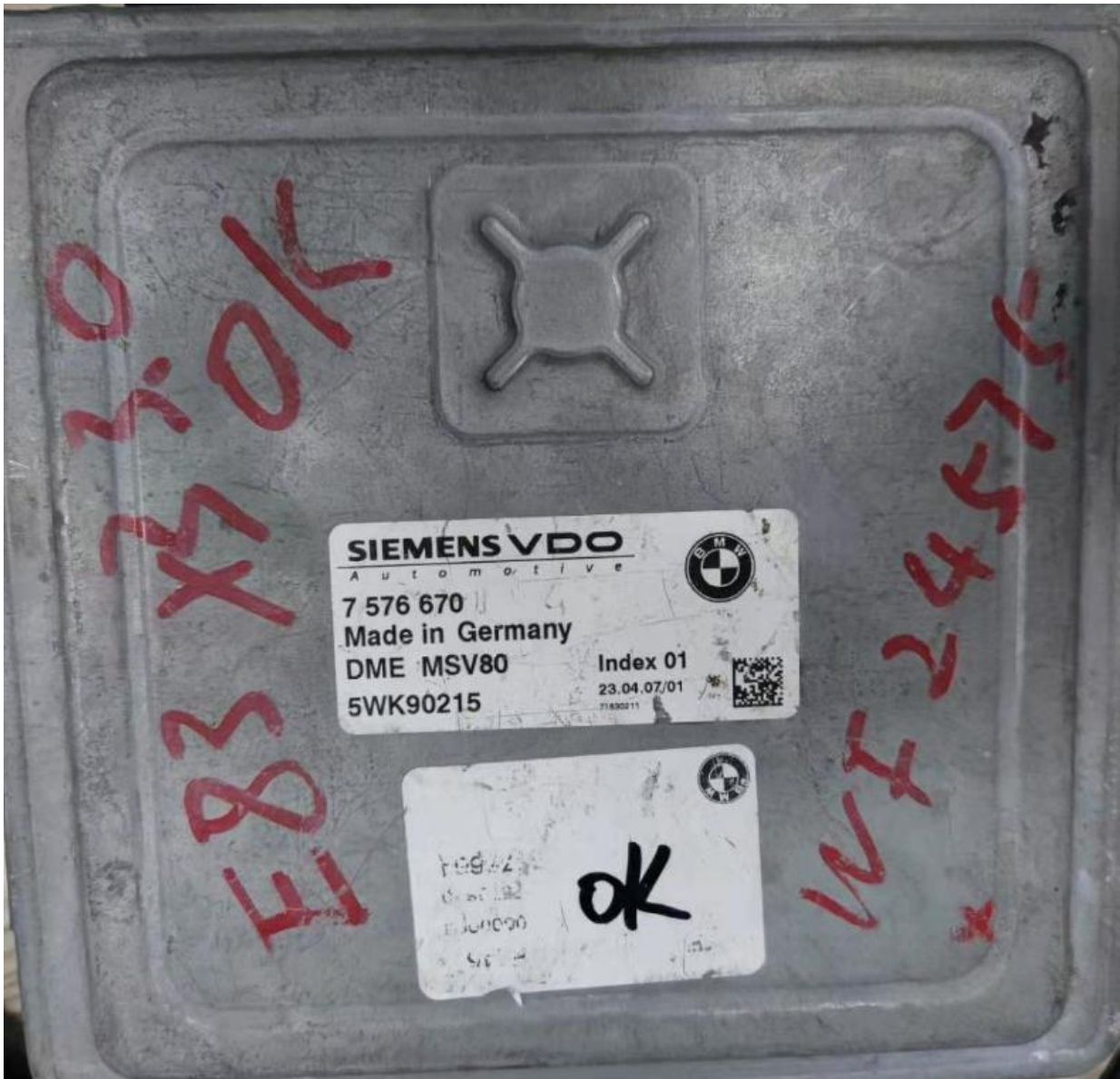


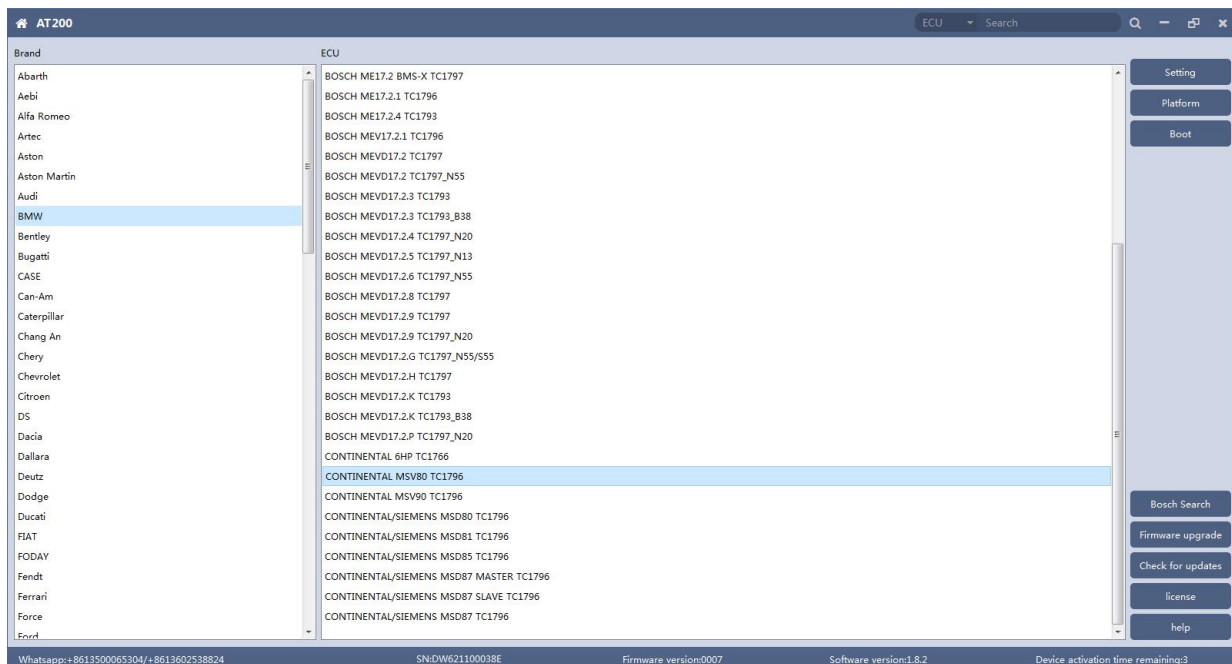
AT200 MSV80 read/ write ISN and back up data

1. Connection

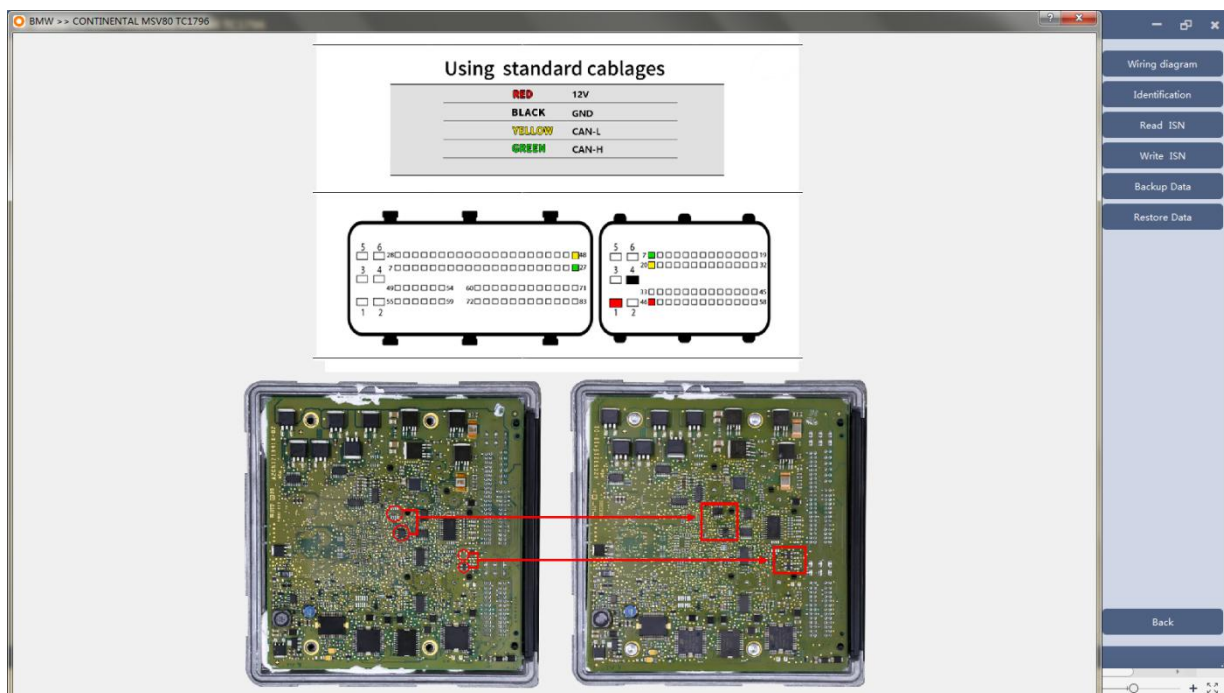
1.1 Check the ecu version first

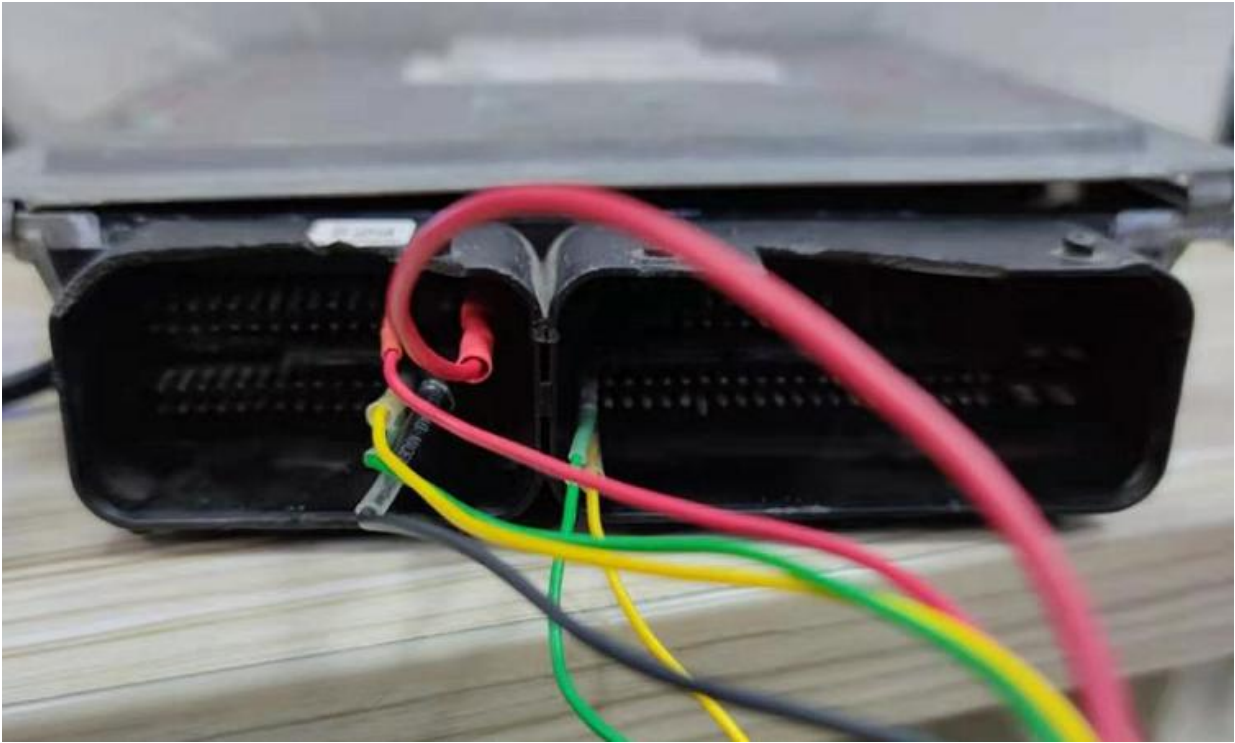


1.2 Open software and find the correct option(choose MSV80 here)

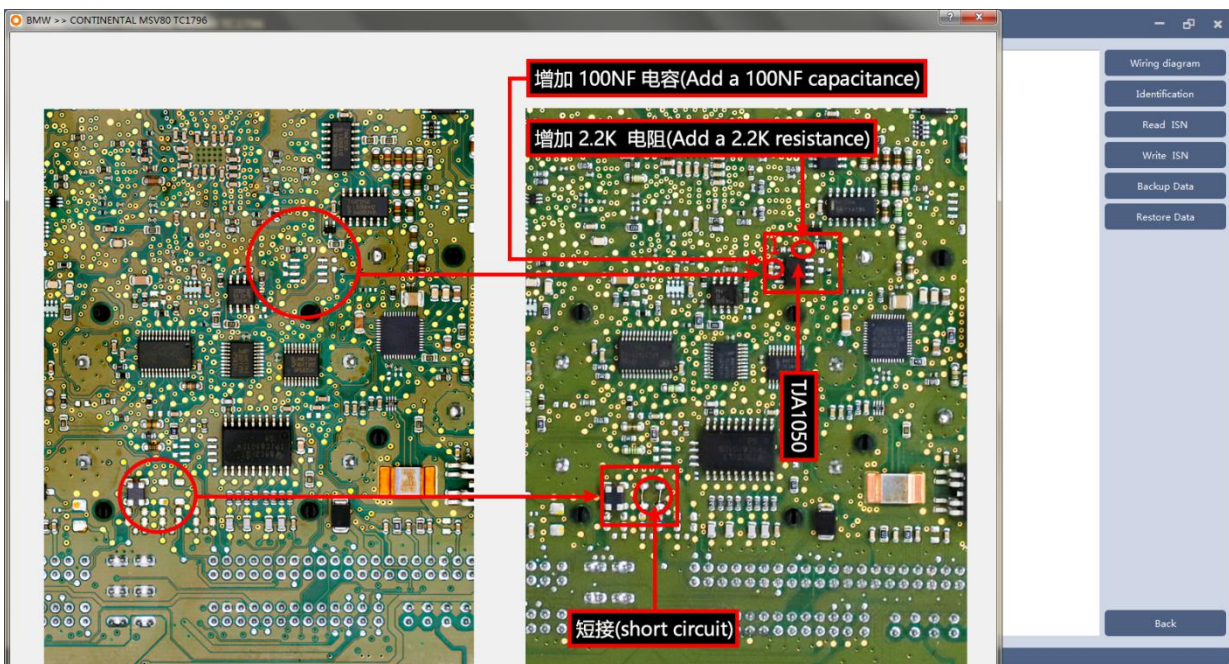


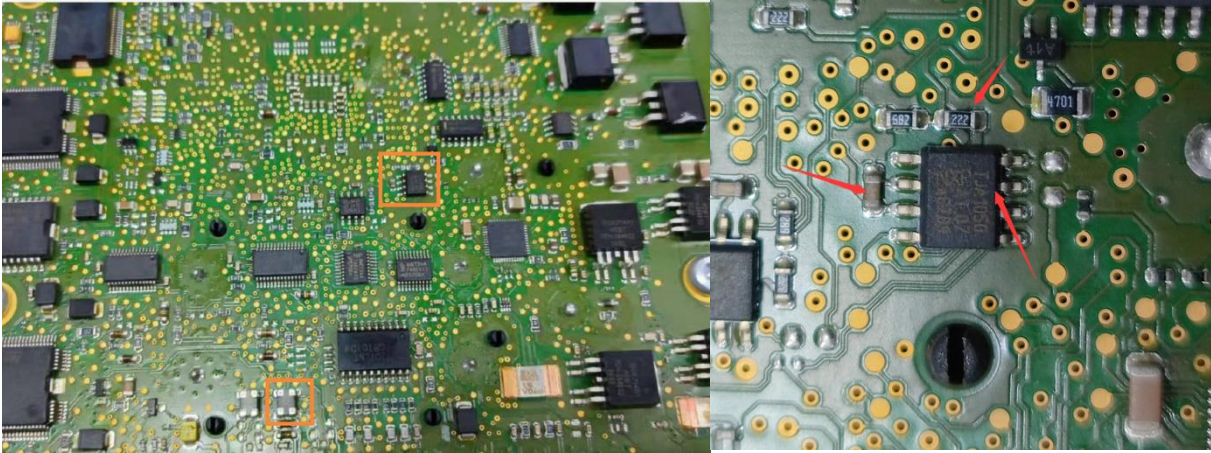
1.3 When the wires of the adapter is connected only according to the first wiring diagram, only the ISN can be read. At this time, other functions such as writing ISN will fail.





1.4 In second diagram, Need to remove ecu cover and add a 2.2K resistor, a 100NF capacitor and a TJA1050 communication chip, and short circuit in place that marked in diagram. The complete operation can only be carried out after the wiring here is completed(Need to plug 12V to AT200).





2. Identification ECU(Confirm whether ECU information can be recognized normally at this time)

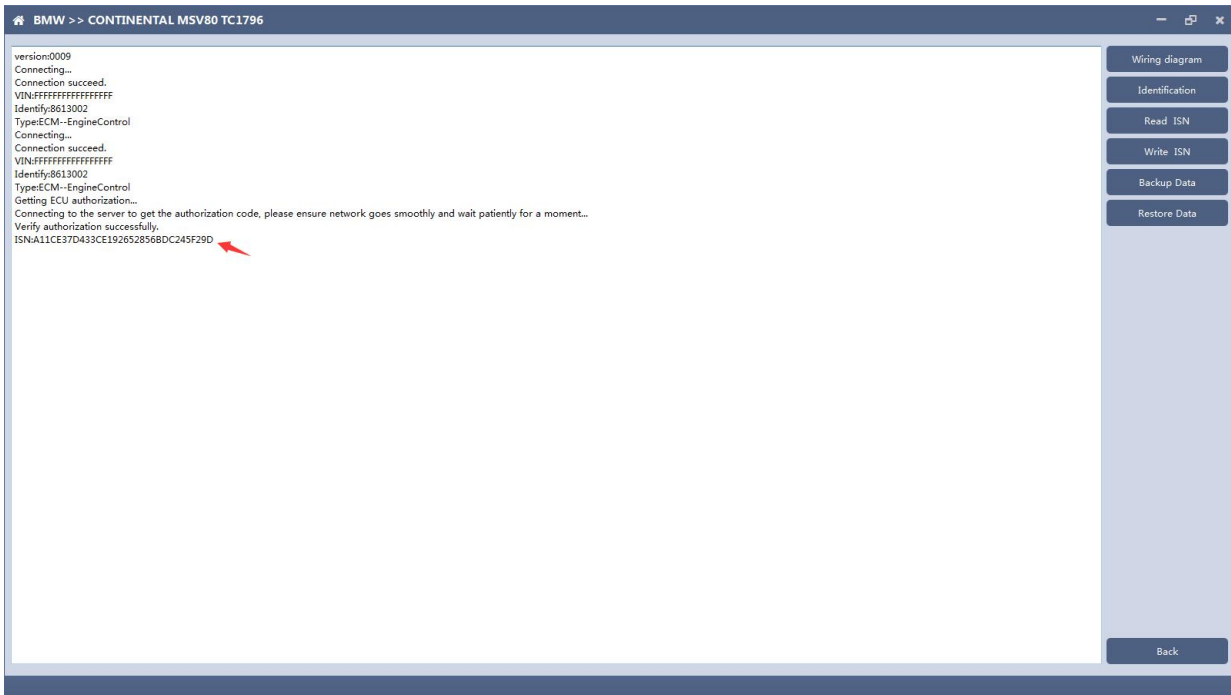
(There is no VIN information in our ECU. Cgdi BMW can be used to program ECU and modify VIN information)



3. Read ISN

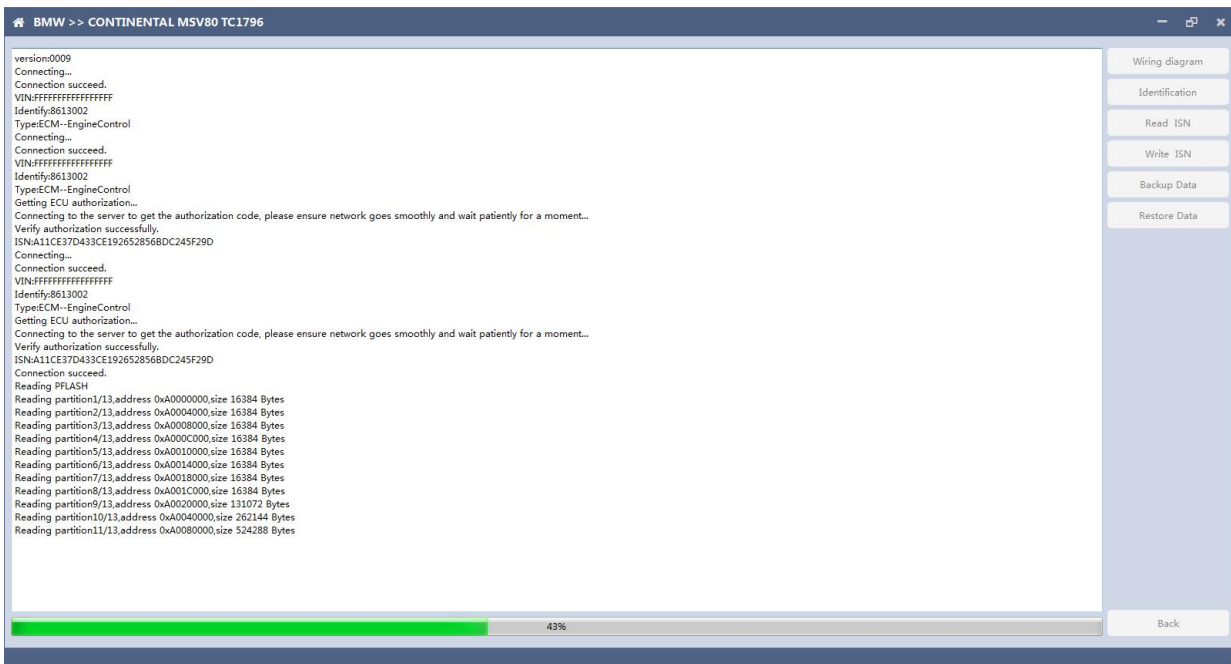
Click "Read ISN" button to read ISN(Please note: this operation

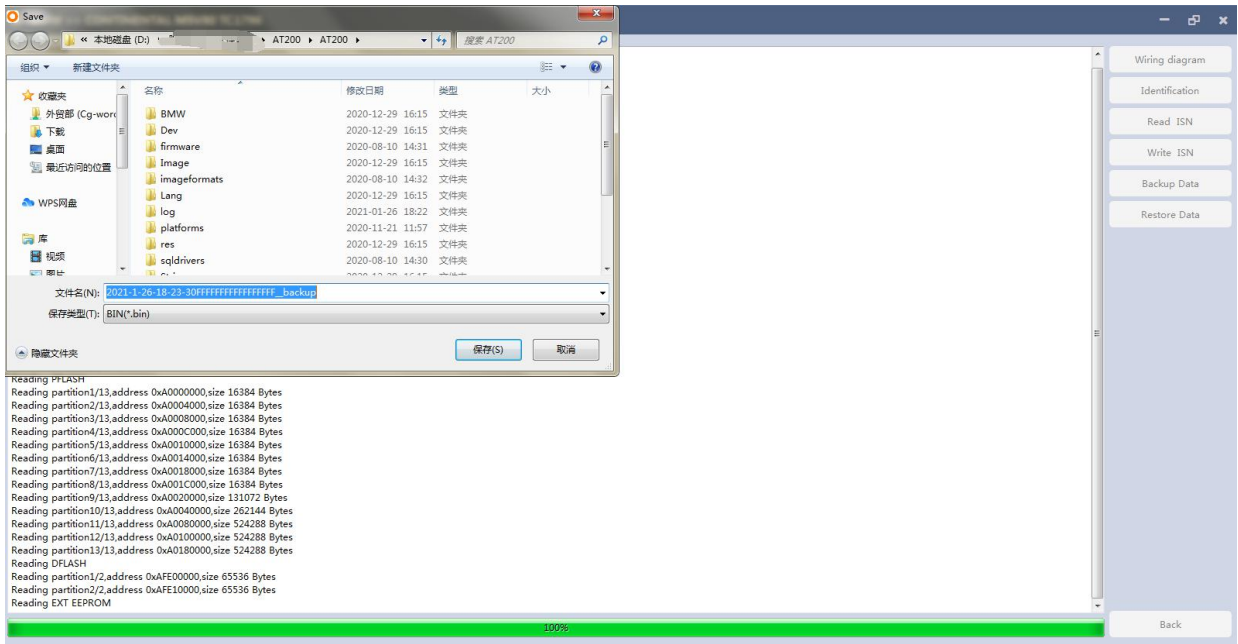
need to be connected internet.)



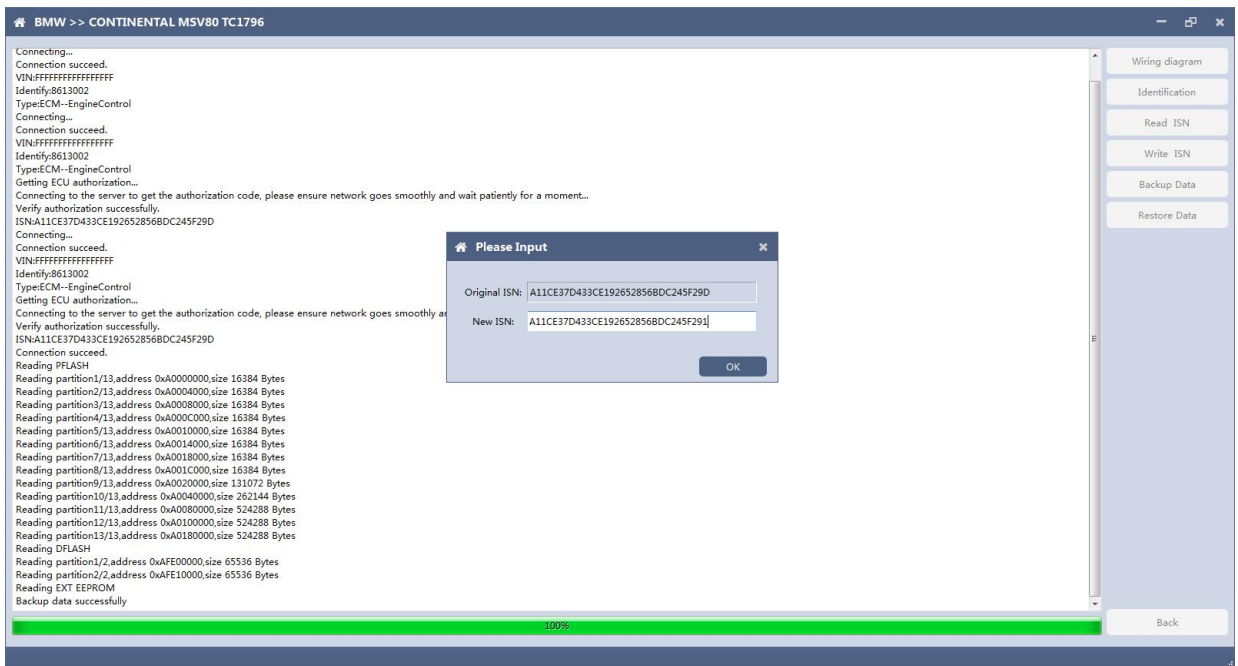
4. Write ISN

4.1 Click " Write ISN" button, it will start to read and need to save it(saved in at200 folder by default).





4.2 After saving successfully, a pop-up window will pop up to modify the ISN. Modify the ISN needed ,click OK and will start to write the ISN information.



BMW >> CONTINENTAL MSV80 TC1796

ISN:A11CE37D433CE192652856BDC245F29D
Connecting...
Connection succeed.
VIN:FFFFFFFFFFFFFFF
Identify:8613002
Type:ECM--EngineControl
Getting ECU authorization...
Connecting to the server to get the authorization code, please ensure network goes smoothly and wait patiently for a moment...
Verify authorization successfully.
ISN:A11CE37D433CE192652856BDC245F29D
Connection succeed.
Reading PFLASH
Reading partition1/13.address 0xA0000000.size 16384 Bytes
Reading partition2/13.address 0xA0004000.size 16384 Bytes
Reading partition3/13.address 0xA0008000.size 16384 Bytes
Reading partition4/13.address 0xA000C000.size 16384 Bytes
Reading partition5/13.address 0xA0010000.size 16384 Bytes
Reading partition6/13.address 0xA0014000.size 16384 Bytes
Reading partition7/13.address 0xA0018000.size 16384 Bytes
Reading partition8/13.address 0xA001C000.size 16384 Bytes
Reading partition9/13.address 0xA0020000.size 131072 Bytes
Reading partition10/13.address 0xA0040000.size 262144 Bytes
Reading partition11/13.address 0xA0080000.size 524288 Bytes
Reading partition12/13.address 0xA0100000.size 524288 Bytes
Reading partition13/13.address 0xA0180000.size 524288 Bytes
Reading DFLASH
Reading partition1/2.address 0xAFE00000.size 65536 Bytes
Reading partition2/2.address 0xAFE10000.size 65536 Bytes
Reading EXT EEPROM
Backup data successfully
Writing PFLASH
Writing partition1/13.address 0xA0000000.size 16384 Bytes
Writing partition2/13.address 0xA0004000.size 16384 Bytes
Writing partition3/13.address 0xA0008000.size 16384 Bytes
Writing partition4/13.address 0xA000C000.size 16384 Bytes
Writing partition5/13.address 0xA0010000.size 16384 Bytes
Writing partition6/13.address 0xA0014000.size 16384 Bytes
Writing partition7/13.address 0xA0018000.size 16384 Bytes
Writing partition8/13.address 0xA001C000.size 16384 Bytes
Writing partition9/13.address 0xA0020000.size 131072 Bytes
Writing partition10/13.address 0xA0040000.size 262144 Bytes
Writing partition11/13.address 0xA0080000.size 524288 Bytes
Writing partition12/13.address 0xA0100000.size 524288 Bytes

96%

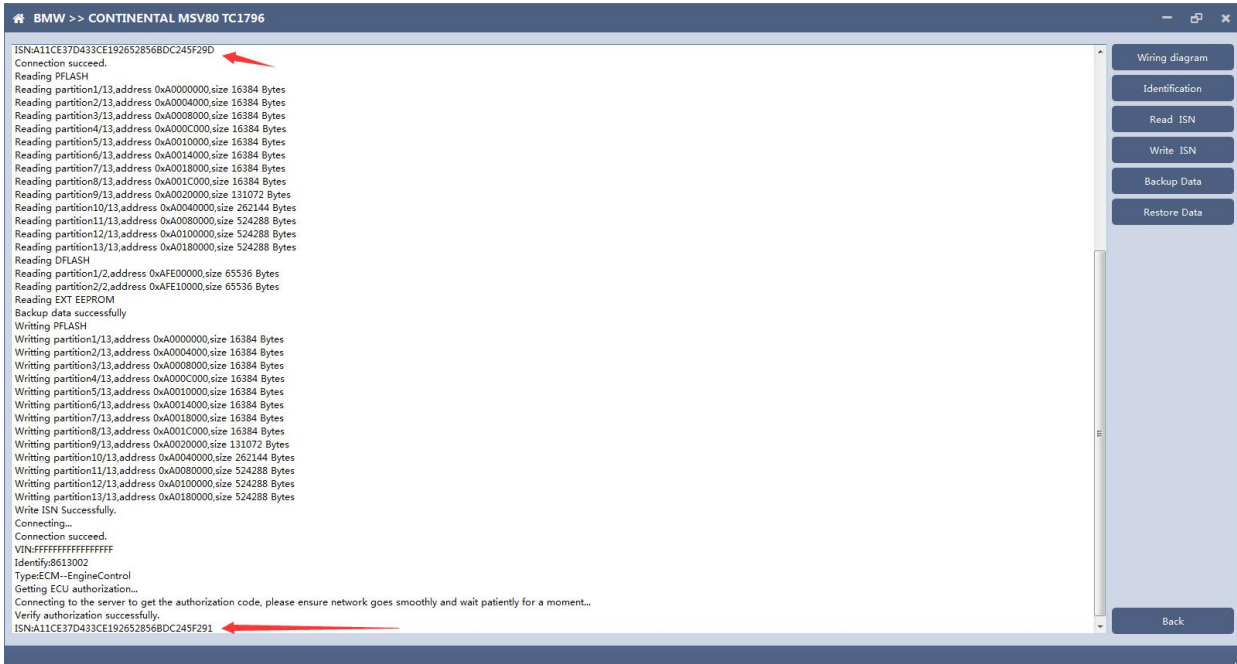
Wiring diagram
Identification
Read ISN
Write ISN
Backup Data
Restore Data
Back

BMW >> CONTINENTAL MSV80 TC1796

ISN:A11CE37D433CE192652856BDC245F29D
Connecting...
Connection succeed.
VIN:FFFFFFFFFFFFFFF
Identify:8613002
Type:ECM--EngineControl
Getting ECU authorization...
Connecting to the server to get the authorization code, please ensure network goes smoothly and wait patiently for a moment...
Verify authorization successfully.
ISN:A11CE37D433CE192652856BDC245F29D
Connection succeed.
Reading PFLASH
Reading partition1/13.address 0xA0000000.size 16384 Bytes
Reading partition2/13.address 0xA0004000.size 16384 Bytes
Reading partition3/13.address 0xA0008000.size 16384 Bytes
Reading partition4/13.address 0xA000C000.size 16384 Bytes
Reading partition5/13.address 0xA0010000.size 16384 Bytes
Reading partition6/13.address 0xA0014000.size 16384 Bytes
Reading partition7/13.address 0xA0018000.size 16384 Bytes
Reading partition8/13.address 0xA001C000.size 16384 Bytes
Reading partition9/13.address 0xA0020000.size 131072 Bytes
Reading partition10/13.address 0xA0040000.size 262144 Bytes
Reading partition11/13.address 0xA0080000.size 524288 Bytes
Reading partition12/13.address 0xA0100000.size 524288 Bytes
Reading partition13/13.address 0xA0180000.size 524288 Bytes
Reading DFLASH
Reading partition1/2.address 0xAFE00000.size 65536 Bytes
Reading partition2/2.address 0xAFE10000.size 65536 Bytes
Reading EXT EEPROM
Backup data successfully
Writing PFLASH
Writing partition1/13.address 0xA0000000.size 16384 Bytes
Writing partition2/13.address 0xA0004000.size 16384 Bytes
Writing partition3/13.address 0xA0008000.size 16384 Bytes
Writing partition4/13.address 0xA000C000.size 16384 Bytes
Writing partition5/13.address 0xA0010000.size 16384 Bytes
Writing partition6/13.address 0xA0014000.size 16384 Bytes
Writing partition7/13.address 0xA0018000.size 16384 Bytes
Writing partition8/13.address 0xA001C000.size 16384 Bytes
Writing partition9/13.address 0xA0020000.size 131072 Bytes
Writing partition10/13.address 0xA0040000.size 262144 Bytes
Writing partition11/13.address 0xA0080000.size 524288 Bytes
Writing partition12/13.address 0xA0100000.size 524288 Bytes
Writing partition13/13.address 0xA0180000.size 524288 Bytes
Write ISN Successfully.

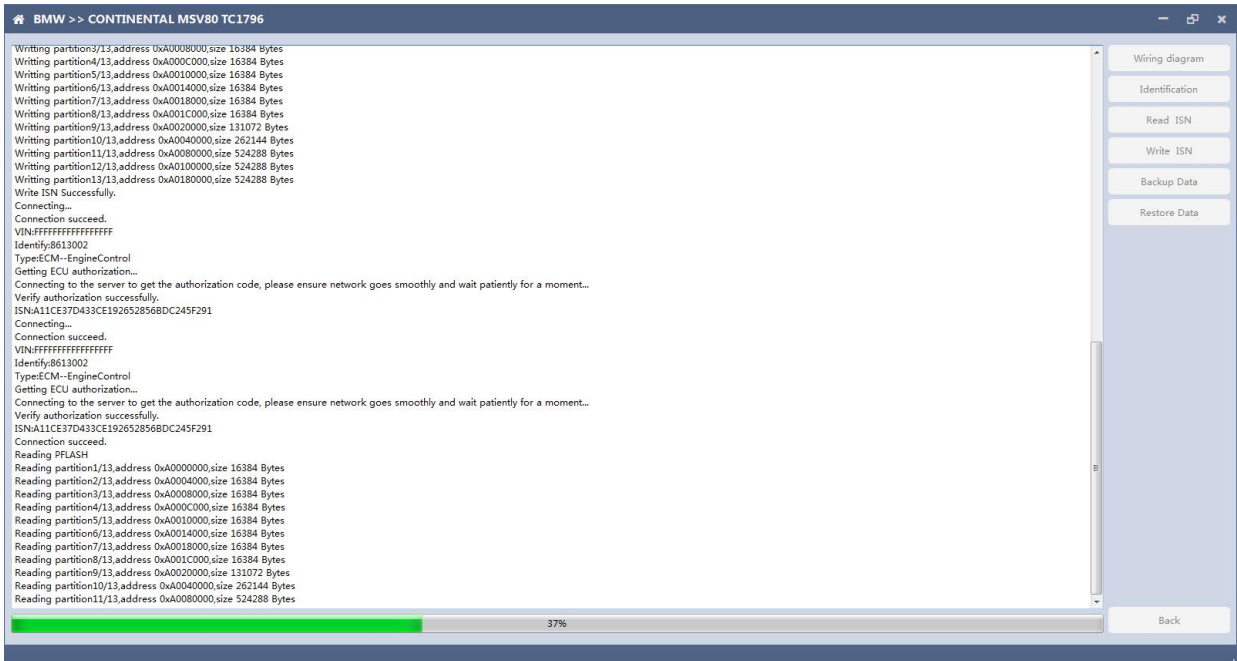
Wiring diagram
Identification
Read ISN
Write ISN
Backup Data
Restore Data
Back

4.3 Read ISN again to check if write success.

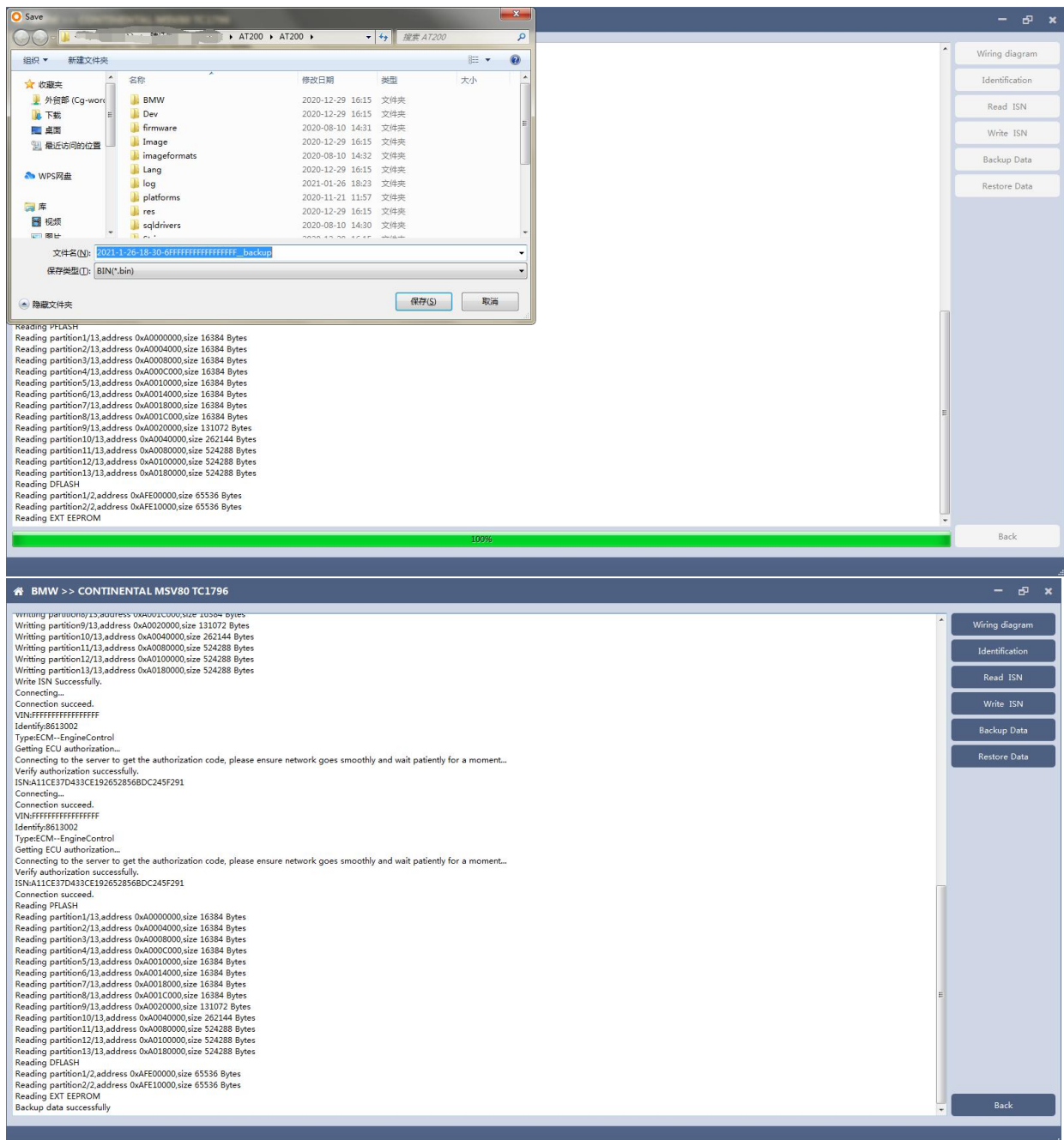


5. Backup data

5.1 Click " Backup data" button to read data and save it(Please note: this operation need to be connected internet.)



5.2 Software will ask to save the data after backup success(saved in at200 folder by default).

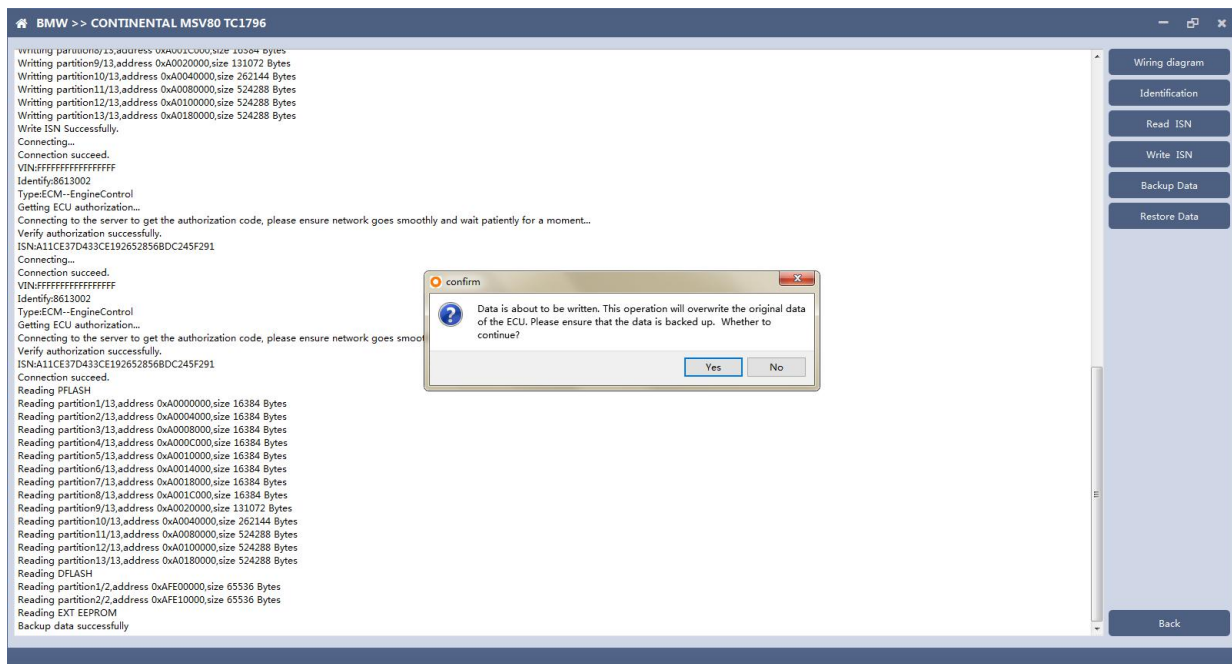


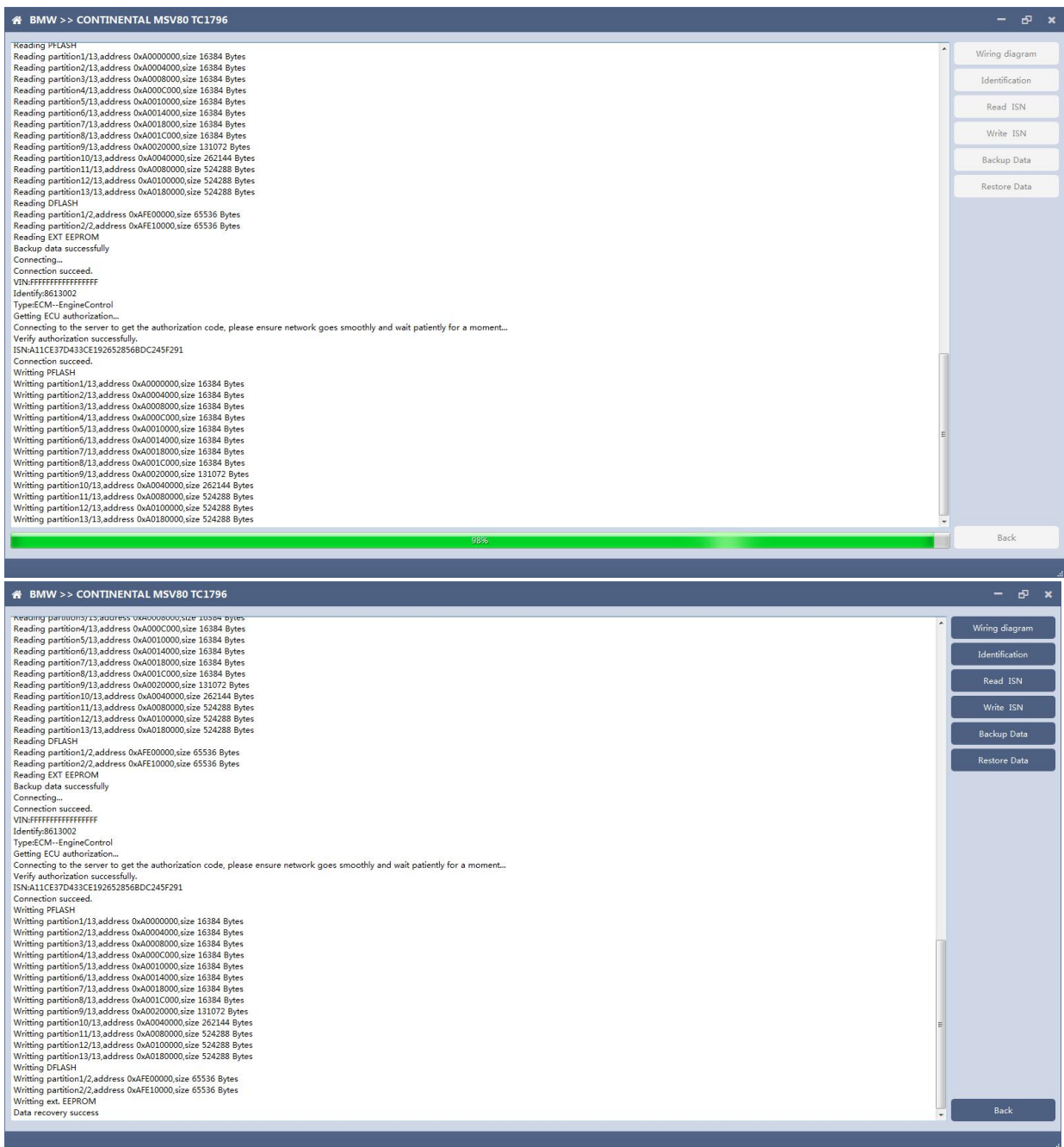
6. Restore data

6.1 Click "Restore data" button to write ECU data, before writing, make sure that the data has been backed up. The recovered data will cover the data of the current ECU. The data can be the data of current

ECU or other ECU of the same type.

Note: in the process of data recovery, it is strictly forbidden to disconnect the power supply or the connection of the device, otherwise the ECU may be damaged; if the software is shut down or the computer is shut down or crashes unexpectedly in the process of data recovery, please do not disconnect the power supply or the connection of the device, and keep it for 15 minutes, the device can complete the data recovery independently.





Website: www.cgsulit.com/

Youtube video:

AT200 - BMW MSV80 Engine Computer Read and Write ISN and Module Cloning.

<https://www.youtube.com/watch?v=-xvshuuGMXY&feature=youtu.be>